



RUHRGETRIEBE

EN



Worm gearbox

Angular gearbox

SN 26 H

Centre distance 31 mm

Type/Version
SN 26 H

Worm gearbox Angular gearbox



Features

Centre distance: **31 mm**
Worm gear set, right-handed

Shaft design: Single-sided or double-sided output shaft

Shaft dimensions: Input shaft: with feather keyway $\varnothing 12 \times 16$, grooved 4x12
Output shaft: with feather keyway $\varnothing 14$, grooved 5

Lubricant: Maintenance-free, lifetime lubrication

Housing: Aluminium
RAL9006 Whitealuminium; further colours possible

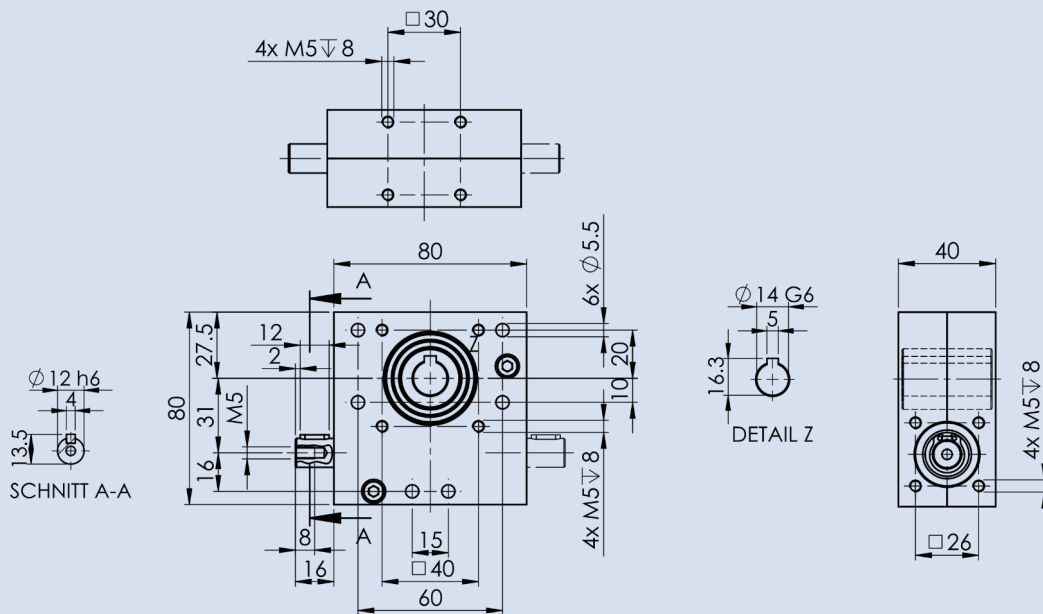
Service life: 2,000 hours, S1 operation

Other housing sizes on request [A17, A33, A40, A53, A65]

Variants



09/2024

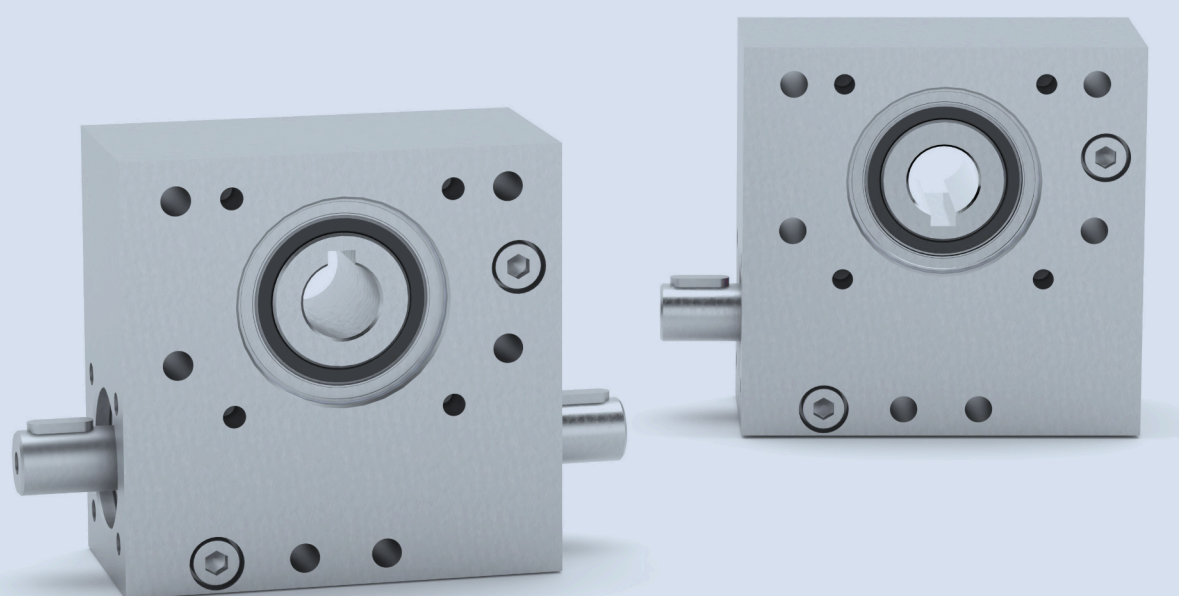


Designation	Ratios [i]	Article no. Single-sided shaft	Article no. Double-sided shaft	Input speed n1 [min ⁻¹]	Max. Input torque T1 [Nm]	Max. Output torque T2 [Nm]	Input side Axial/radial force FA1/ FR1 [N]	Output side Axial/radial force FA2/ FR2 [N]	Efficiency [%]
SN 26H A31 i2.5	2.5 : 1	G005538	G005556	1400	1.67	3.3	100 / 100	400 / 400	79
SN 26H A31 i4	4 : 1	G005539	G005557	1400	2.20	6.7	100 / 100	400 / 400	76
SN 26H A31 i5	5 : 1	G005540	G005558	1400	1.89	7.1	100 / 100	400 / 400	75
SN 26H A31 i7	7 : 1	G005541	G005559	1400	1.43	7.2	100 / 100	400 / 400	72
SN 26H A31 i8	8 : 1	G005542	G005560	1400	1.32	7.5	100 / 100	400 / 400	71
SN 26H A31 i10	10 : 1	G005543	G005561	1400	1.11	7.1	100 / 100	400 / 400	64
SN 26H A31 i12	12 : 1	G005544	G005562	1400	1.00	7.8	100 / 100	400 / 400	65
SN 26H A31 i15	15 : 1	G005545	G005563	1400	0.89	8.0	100 / 100	400 / 400	60
SN 26H A31 i18	18 : 1	G005546	G005564	1400	0.76	7.7	100 / 100	400 / 400	56
SN 26H A31 i20	20 : 1	G005547	G005565	1400	0.70	7.7	100 / 100	400 / 400	55
SN 26H A31 i24	24 : 1	G005548	G005566	1400	0.65	6.9	100 / 100	400 / 400	44
SN 26H A31 i25	25 : 1	G005549	G005567	1400	0.64	7.2	100 / 100	400 / 400	45
SN 26H A31 i30	30 : 1	G005550	G005568	1400	0.60	7.7	100 / 100	400 / 400	43
SN 26H A31 i38	38 : 1	G005551	G005569	1400	0.53	8.5	100 / 100	400 / 400	42
SN 26H A31 i50	50 : 1	G005552	G005570	1400	0.32	6.7	100 / 100	400 / 400	31
SN 26H A31 i75	75 : 1	G005554	G005572	1400	0.31	5.4	100 / 100	400 / 400	23
SN 26H A31 i167	167 : 1	G005555	G005573	1400	0.15	4.3	100 / 100	400 / 400	17

Other ratios on request.



RUHRGETRIEBE



YOUR DRIVING FORCE.

RUHRGETRIEBE KG
Am Förderturm 29
45472 Mülheim an der Ruhr
Germany

+49 (0)208 780 680
info@ruhrgetriebe.de | www.ruhrgetriebe.de



Worm gearbox
Planetary gearbox
Helical gearbox
SpeeroX gearbox
IEC standard motors